

A powerful boring machine that can be customized to suit your needs.



DESCRIPTION

A versatile and modular line boring machine offering a choice of electric and hydraulic boring bar drive motors, with a mechanical drive for the feed assembly. Choose a standard machine kit from pages 2 and 3, or configure your own machine to suit your requirements.

KEY FEATURES

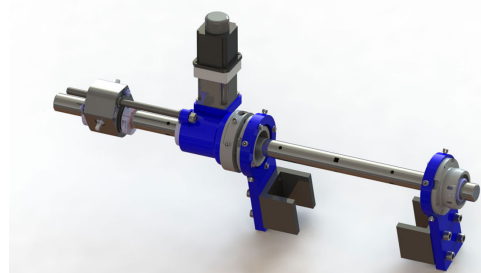
- Modular components make setup quick and easy
- Through-bar design allows the rotational drive and feed unit to be mounted anywhere along the bar.
- Mechanical bi-directional variable auto-feed
- Drive and feed units which accept a variety of boring bar diameters
- Modular add-on components provide a flexible line boring solution for multiple projects:
Blind boring, Line boring, Facing, Drilling, Grooving.
- Available in electric, servo or hydraulic motor configurations.

PERFORMANCE AND SPECIFICATION

PERFORMANCE AND SPECIFICATION		
BORING DIAMETER RANGE		
60mm boring bar	2.5" to 24"	63.5 to 609.6mm
30mm & 60mm boring bar	1.5" to 24"	38.1 to 609.6mm
BORING BAR DIAMETER		30mm , 60mm
BORING BAR STROKE		12", 24", or 36"
POWER DRIVE MOTOR OPTIONS		
Electric motor	2.2 KW	3.0 Hp
Servo motor	2.5 KW	3.3 Hp
Hydraulic motor	15 KW	20.4 Hp
VARIABLE TOOL FEED RATE		
	0 to 0.024"/r	0 to 0.6mm/r

STANDARD MACHINE PACKS

Choose from the suggested machine packs below.
 If you need something more specific see from page 4
 "Configuring your own line boring machine."



JRT60-A 2.5 - 12" (63.5 - 304.8mm) DIAMETER LINE BORING KIT

ITEMS INCLUDED	QUANTITY	CODE
60mm boring bar -2000mm	1	JRT60-3-8
Rotational drive unit (RDU)	1	JRT60-1-1
Servo motor 2.5Kw	1	JRT60-4-1
Electric 220V control box (servo motor)	1	JRT60-4-2
Axial feed unit (AFU)	1	JRT60-2-1
Leadscrew 610mm (24")	1	JRT60-2-3
Single arm mount	2	JRT60-6-2
60mm bar small setup cone 70 - 212.6mm (2.75" - 8.37")	2	JRT60-5-2
60mm bar medium setup cone 212.6 - 304.8mm (8.37" - 12")	2	JRT60-5-3
Tool heads, 63.5 - 304.8mm (2.5" - 12"), 3 pcs	1	JRT60-8-1
Tool kit (16mm Hss tool bit - 50mm)	2	JRT60-9-3
Installation tools	1	
Manual	1	

JRT60-B 2.5 - 24" (63.5 - 609.6mm) DIAMETER LINE BORING KIT

ITEMS INCLUDED	QUANTITY	CODE
60mm boring bar -2000mm	1	JRT60-3-8
Rotational drive unit (RDU)	1	JRT60-1-1
Servo motor 2.5Kw	1	JRT60-4-1
Electric 220V control box (servo motor)	1	JRT60-4-2
Axial feed unit (AFU)	1	JRT60-2-1
Leadscrew 610mm (24")	1	JRT60-2-1
Single arm mount	2	JRT60-6-3
60mm bar small setup cone 70 - 212.6mm (2.75" - 8.37")	2	JRT60-5-2
60mm bar medium setup cone 212.6 - 304.8mm (8.37" - 12")	2	JRT60-5-3
60mm bar large setup cone 304.8 - 609.6mm (12" - 24")	2	JRT60-5-4
Tool heads, 63.5 - 304.8mm (2.5" - 12"), 3 pcs	1	JRT60-8-1
Tool heads, 304.8 - 609.6mm (12" - 24"), 3 pcs	1	JRT60-8-2
Tool kit (16mm Hss tool bit - 50mm)	2	JRT60-9-3
Installation tools	1	
Manual	1	

STANDARD MACHINE PACKS (CONTINUE)

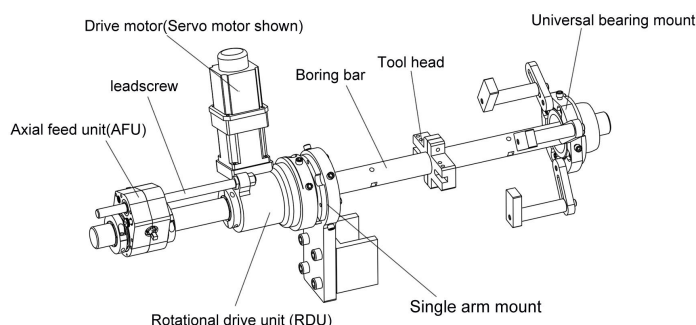
JRT60-C 1.5 - 12" (38.1 - 304.8mm) DIAMETER LINE BORING KIT

ITEMS INCLUDED	QUANTITY	CODE
30mm boring bar -1500mm	1	JRT60-3-2
60mm boring bar -2000mm	1	JRT60-3-8
Rotational drive unit (RDU)	1	JRT60-1-1
Servo motor 2.5Kw	1	JRT60-4-1
Electric 220V control box (servo motor)	1	JRT60-4-2
Axial feed unit (AFU)	1	JRT60-2-1
Leadscrew 610mm (24")	1	JRT60-2-3
Single arm mount	2	JRT60-6-2
30mm bar setup cone 38.1 - 152.4mm (1.5" - 6")	2	JRT60-5-1
60mm bar small setup cone 70 - 212.6mm (2.75" - 8.37")	2	JRT60-5-2
60mm bar medium setup cone 212.6 - 304.8mm (8.37" - 12")	2	JRT60-5-3
Tool heads, 63.5 - 304.8mm (2.5" - 12"), 3 pcs	1	JRT60-8-1
30mm Sleeve sets. Feed,Drive,Bearingx2	1	JRT60-7-4
Tool kit (10mm Hss tool bit - 50mm)	2	JRT60-9-1
Tool kit (16mm Hss tool bit - 50mm)	2	JRT60-9-3
Installation tools	1	
Manual	1	

JRT60-D 1.5 - 24" (38.1 - 609.6mm) DIAMETER LINE BORING KIT

ITEMS INCLUDED	QUANTITY	CODE
30mm boring bar -1500mm	1	JRT60-3-2
60mm boring bar -2000mm	1	JRT60-3-8
Rotational drive unit (RDU)	1	JRT60-1-1
Servo motor 2.5Kw	1	JRT60-4-1
Electric 220V control box (servo motor)	1	JRT60-4-2
Axial feed unit (AFU)	1	JRT60-2-1
Leadscrew 610mm (24")	1	JRT60-2-3
Single arm mount	2	JRT60-6-2
30mm bar setup cone 38.1 - 152.4mm (1.5" - 6")	2	JRT60-5-1
60mm bar small setup cone 70 - 212.6mm (2.75" - 8.37")	2	JRT60-5-2
60mm bar medium setup cone 212.6 - 304.8mm (8.37" - 12")	2	JRT60-5-3
60mm bar large setup cone 304.8 - 609.6mm (12" - 24")	2	JRT60-5-4
Tool heads, 63.5 - 304.8mm (2.5" - 12"), 3 pcs	1	JRT60-8-1
Tool heads, 304.8 - 609.6mm (12" - 24"), 3 pcs	1	JRT60-8-2
30mm Sleeve sets. Feed,Drive,Bearingx2	1	JRT60-7-4
Tool kit (10mm Hss tool bit - 50mm)	2	JRT60-9-1
Tool kit (16mm Hss tool bit - 50mm)	2	JRT60-9-3
Installation tools	1	
Manual	1	

CONFIGURING YOUR OWN LINE BORING MACHINE



RECOMMENDED STEPS

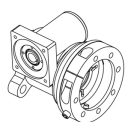
1. Select leadscrew length
2. Select boring bar
3. Select drive motor and control box
4. Select setup cones
5. Select mounting options
6. Select sleeve sets
7. Select tool heads
8. Select tool kits
9. Select measuring tools

3 SELECT LEADSCREW

Select leadscrew to suit the stroke required. Leadscrew length can be customized.

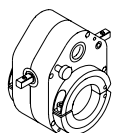
LEADSCREW LENGTHS	CODE
305mm(12") stroke leadscrew	JRT60-2-2
610mm(24") stroke leadscrew	JRT60-2-3
915mm(36") stroke leadscrew	JRT60-2-4
Limited lock	JRT60-2-5

1 ROTATIONAL DRIVE UNIT



	CODE
Rotational drive unit (RDU)	JRT60-1-1

2 AXIAL FEED UNIT



	CODE
Axial feed unit (AFU)	JRT60-2-1

4 SELECT BORING BAR

Boring bar length can be customized.

30MM BAR, 10MM TOOLING HOLES	CODE
30mm x 1000mm bar	JRT60-3-1
30mm x 1500mm bar	JRT60-3-2
30mm x 2000mm bar	JRT60-3-3
30mm x 2500mm bar	JRT60-3-4
30mm x 3000mm bar	JRT60-3-5

60MM BAR, 16MM TOOLING HOLES	CODE
60mm x 1000mm bar	JRT60-3-6
60mm x 1500mm bar	JRT60-3-7
60mm x 2000mm bar	JRT60-3-8
60mm x 2500mm bar	JRT60-3-9
60mm x 3000mm bar	JRT60-3-10
60mm x 3500mm bar	JRT60-3-11

5 DRIVE MOTOR & CONTROL BOX

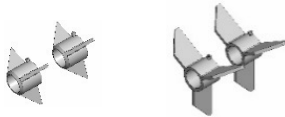
Drive motors are reversible and variable speed. The final max bar rpm is quoted.



DRIVE MOTOR & CONTROL BOX	CODE
Servo motor 2.5Kw (53.3rpm)	JRT60-4-1
Electric 220v control box(Servo motor)	JRT60-4-2
Electric motor 2.2Kw (112rpm)	JRT60-4-3
Electric 380v control box(Electric motor)	JRT60-4-4
Hydraulic motor (optional)	JRT60-4-5
Electric 380v hydraulic station(15Kw)	JRT60-4-6

6 SELECT SETUP CONES

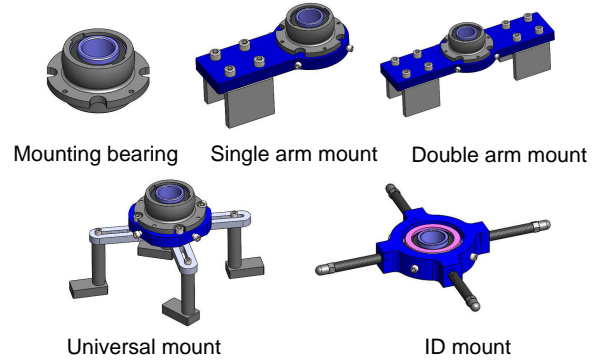
Setup cones are sold in pairs.



SETUP CONES	CODE
30mm bar setup cones(1.5"- 6")	JRT60-5-1
60mm bar small setup cones(2.75"- 8.37")	JRT60-5-2
60mm bar setup cones(8.37"- 12")	JRT60-5-3
60mm bar setup cones(12"- 24")	JRT60-5-4

7 SELECT MOUNTING OPTIONS

Mounting options are supplied complete with bearing.



SELECT MOUNTING OPTIONS	CODE
Mounting bearing (Hosting and bearing)	JRT60-6-1
Single arm mount (1 piece)	JRT60-6-2
Double arm mount (1 piece)	JRT60-6-3
Universal mount (1 piece)	JRT60-6-4
ID mount (1 piece)	JRT60-6-5

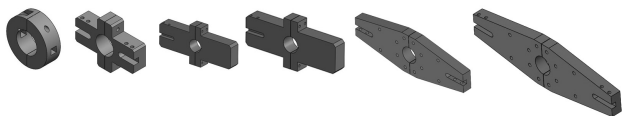
8 SELECT SLEEVE SETS

Enable the same RDU,AFU and mounting to be used on 30mm boring bar.



SELECT SLEEVE SETS	CODE
Drive rotational unit sleeve	JRT60-7-1
Axial feed unit sleeve	JRT60-7-2
Bearing sleeve(1 piece)	JRT60-7-3
30mm Sleeve sets.Drive,Feed,Bearingx2	JRT60-7-4

9 SELECT TOOL HEADS



SELECT TOOL HEADS	CODE
Tool heads,63.5-304.8mm (2.5"-12"), 16mm tooling holes,3 pcs	JRT60-8-1
Tool heads,304.8-609.6mm (12"-24"), 16mm tooling holes,3 pcs	JRT60-8-2

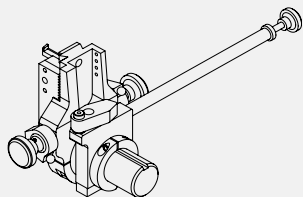
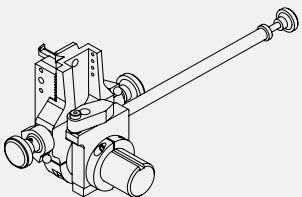
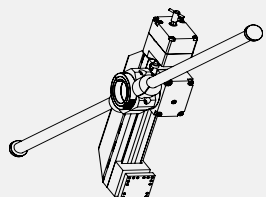
10 SELECT TOOL KITS



SELECT TOOL KITS	CODE
10mm Hss tool bit,50mm	JRT60-9-1
10mm Hss tool bit,200mm	JRT60-9-2
16mm Hss tool bit,50mm	JRT60-9-3
16mm Hss tool bit,200mm	JRT60-9-4
10mm Inserted tool holder	JRT60-9-5
Carbide tips(10mm Inserted tool holder)	JRT60-9-6
16mm Inserted tool holder	JRT60-9-7
Carbide tips(16mm Inserted tool holder	JRT60-9-8

13 FACING HEADS

Facing and grooving heads for your JRT60

Code	JRT60-D-01	JRT60-D-02	JRT60-D-03
Item name	Facing and grooving head	Facing and grooving head	Heavy duty facing head
			
Bar Dia.	60mm	60mm	60mm
Facing Dia.	63.5-304.8mm(2.5"-12")	63.5-482.6mm(2.5"-19")	63.5-609.6mm(2.5"-24")
Grooving Dia.	101.6-304.8mm(4"-12")	101.6-482.6mm(4"-19")	101.6-609.6mm(4"-24")

11 SELECT MEASURING TOOL

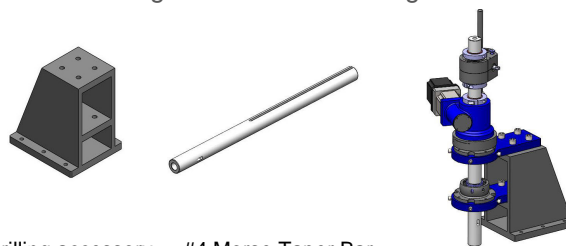


Dia indicator Digital caliper(Metric and Inch)

SELECT MEASURING TOOL	CODE
Cutter measuring tool: Dia indicator(with magnet base)	JRT60-10-1
Hole measuring tool: Digital caliper	JRT60-10-2

12 ACCESSORY FOR DRILLING

Customer will need to order #4 Morse Taper bar to finish the drilling and blind hole boring work.

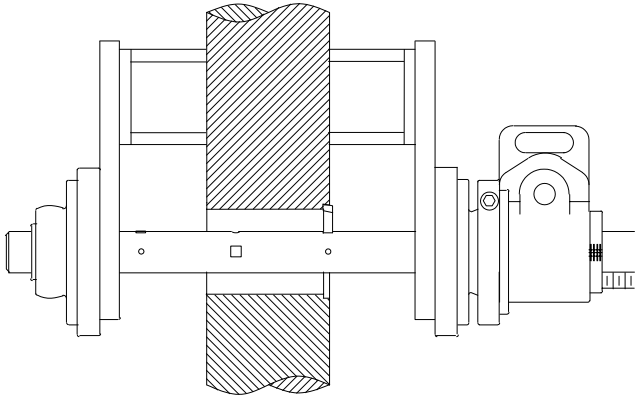


Drilling accessory #4 Morse Taper Bar

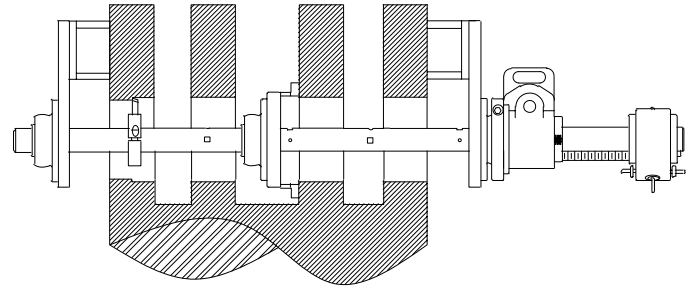
ACCESSORY FOR DRILLING	CODE
Drilling accessory	JRT60-11-1
4# Morse Taper Bar 60mmx1200mm	JRT60-11-2
4# Morse Taper Bar 60mmx1500mm	JRT60-11-3

APPLICATIONS

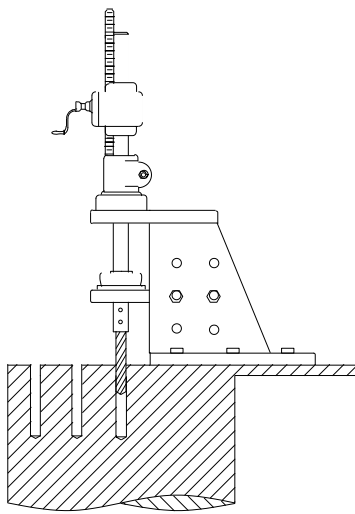
Whether it's conventional boring, drilling, facing or grooving, the JRT60 has you covered. With versatile setup & machining options, it's the machine you need to get all your toughest jobs done when and where you need it. Typical applications illustrated below.



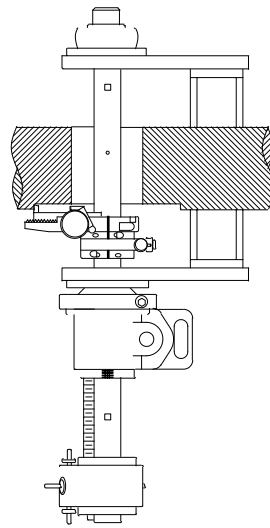
Conventional Boring



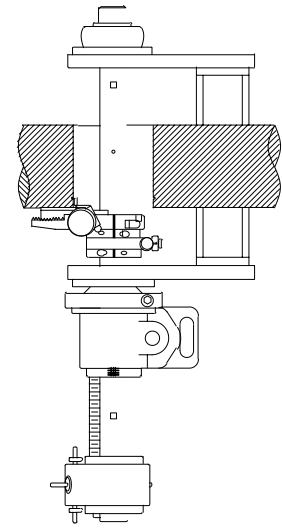
Line Boring



Drilling



Facing



Grooving

APPLICATIONS PHOTOS

The JRT60 is widely used by these industries:

- Construction
- Mining
- Power Generation
- Ship building
- Transportation
- Petrochemical
- Pulp and paper
- Steel and aluminum

Typical applications:

- Heavy equipment repair
- Stern tube boring
- Wicket gate repair on dams
- Bridge building/re-building
- Turbine coupling boring
- Engine block repair
- Bearing seat repair
- Press repair
- Valve body boring
- Pump body boring
- Large fab bore alignment

